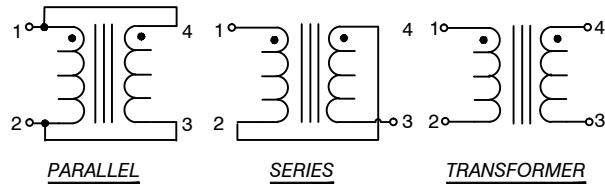


The information contained in this drawing is the sole property of CWS Coil Winding Specialist.
Any reproduction in part or whole without written permission of CWS Coil Winding Specialist is prohibited.



△6 AND REVISION WHERE SHOWN
IF APPLICABLE MARK PART NUMBER

△5 REMOVE INSULATION AND TIN LEADS

△4 WIND ON TO CORE AND EVENLY SPACED
CONSTRUCTION:

TO INSURE INTERGRITY OF WINDING SEPARATION
HI-POT TEST FOR WINDING TO WINDING = 300 VDC MIN.
MAX DCR IS ± 15% OF TYPICAL VALUE.
SERIES DCR= 0.135 OHMS TYP @ 20 °C
SERIES RMS CURRENT = 1.81 AMPS.
PARALLEL: (1,4 - 3,2), SERIES: (1 - 3) TIE (2 - 4).
@ 100 KHZ, 0.250 VRMS, 0.0 ADC,
SERIES OPEN CIRCUIT INDUCTANCE = 78.30 uH ± 25 %,

MAX DCR IS ± 15% OF TYPICAL VALUE
PARALLEL DCR= 0.034 OHMS TYP @ 20 °C,
DELTA TEMP 40 °C, AMBIENT TEMP 85 °C.
PARALLEL RMS CURRENT = 3.62 AMPS @
PARALLEL (1,4 - 3,2), SERIES (1 - 3) TIE (2 - 4).
@ 100 KHZ, 0.250 VRMS, 0.0 ADC,
PARALLEL OPEN CIRCUIT INDUCTANCE = 19.58 uH ± 25 %,
PARALLEL RATED INDUCTANCE = 20.0 uH

△3 SPECIFICATIONS:

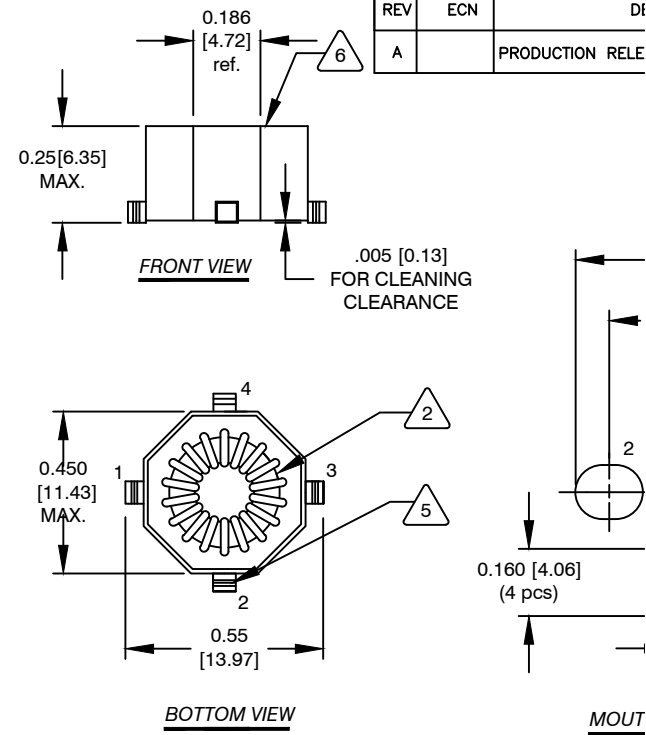
WIRE: UL RECOGNIZED 130°C RATING MAGNET WIRE
CWS BYTEMARK OR OTHER APPROVED PART
CORE: TOROID

△2

BOBBIN RATING CLASS B (130°C) REQUIRED
1 MATERIAL: UL RECOGNIZED 94V-0 FOR FLAMMABILITY

NOTES: UNLESS OTHERWISE SPECIFIED. READ FROM BOTTOM UP.

REVI		
REV	ECN	DI
A		PRODUCTION RELE



QTY	CODE IDENT	MFG. P/I
AUTOCAD		X
SOLIDWORKS		
SIGN		DATE
DRAWN	RPR	7/06/04
CHECKED	JLAU	7/06/04
ENGR.	KSUM	7/06/04
APPR.	JLAU	7/06/04
UNLESS OTHERWISE SPECIFIED		
DIMENSIONING AND TOLERANCE PER ANSI Y14.5M		
ALL DIMENSIONS ARE IN INCHES AND [MILLIMETERS].		
TOLERANCE INCHES: .XXX=±.010 .XX=±.015 ϕ=±0.30'		
TOLERANCE METRICS: .XXX=±.254 .XX=±.38 ϕ=±0.30'		
ANGLE PROJECTION		
DO NOT SCALE DRAWING		
COILWS		WWW.COI
TITLE:		
SIZE	DWG. NO.	
B		
SCALE		